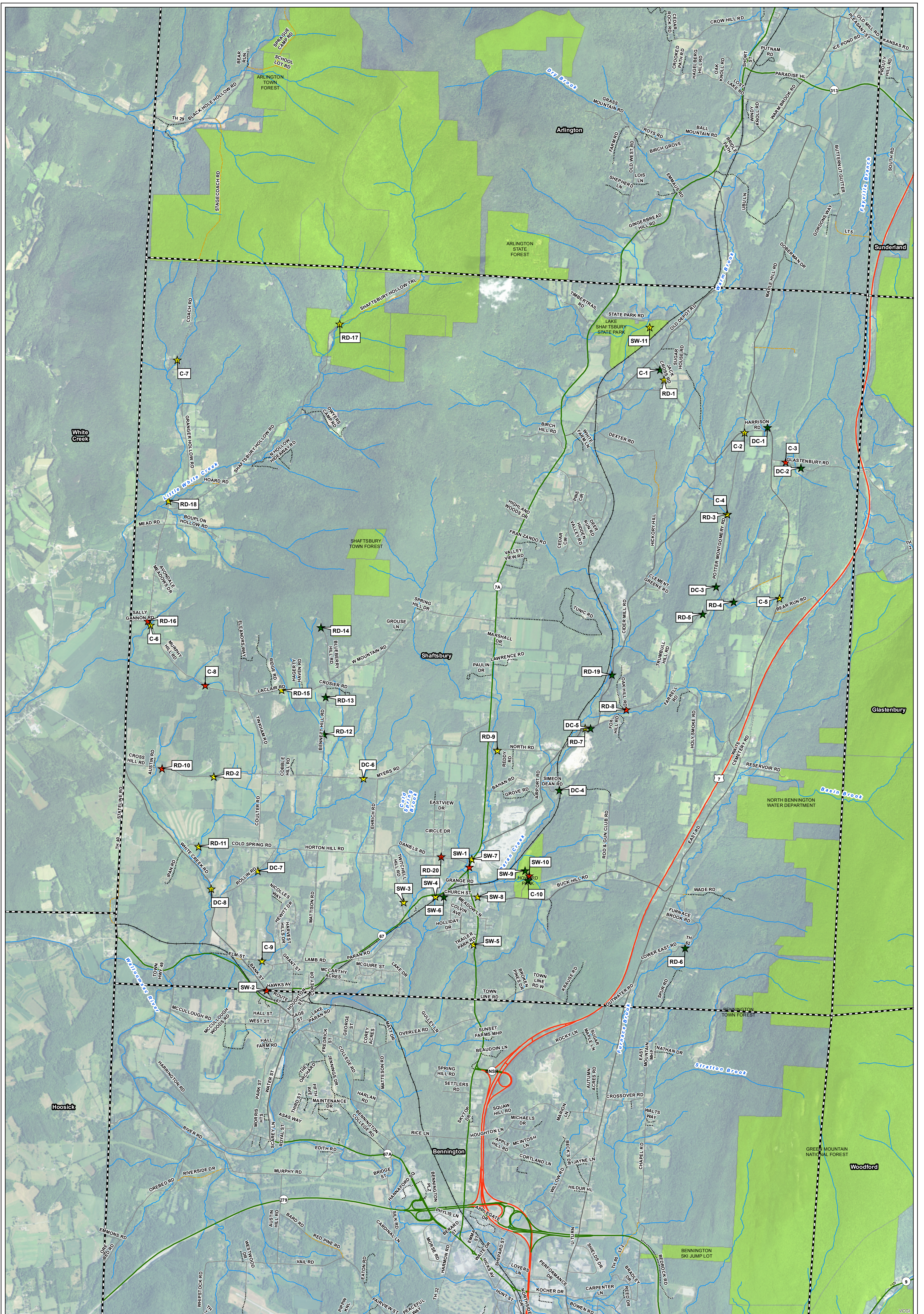


## **APPENDIX A**

### **Stormwater Problem Area Locator Maps (24"x36" & 11"x17")**



## Appendix A

### Stormwater Master Plan

### Problem Areas

### Town of Shaftsbury

- |  |   |
|--|---|
| <p><b>Stormwater Problem Area Priority</b></p> <ul style="list-style-type: none"> <li>★ Low (&lt;13)</li> <li>★ Moderate (13-15)</li> <li>★ High (&gt;15)</li> <li>~ Surface Waters</li> <li>~ Public Conserved Land</li> <li>~ Town Boundaries</li> </ul> | <ul style="list-style-type: none"> <li>— US Highway</li> <li>— Vermont State Highway</li> <li>— Class 1 Town Highway</li> <li>— Class 2 Town Highway</li> <li>— Class 3 Town Highway</li> <li>— Class 4 Town Highway</li> <li>— Legal Trail</li> <li>— Other Road Type</li> <li>— Railroad</li> </ul> |
|--|---|

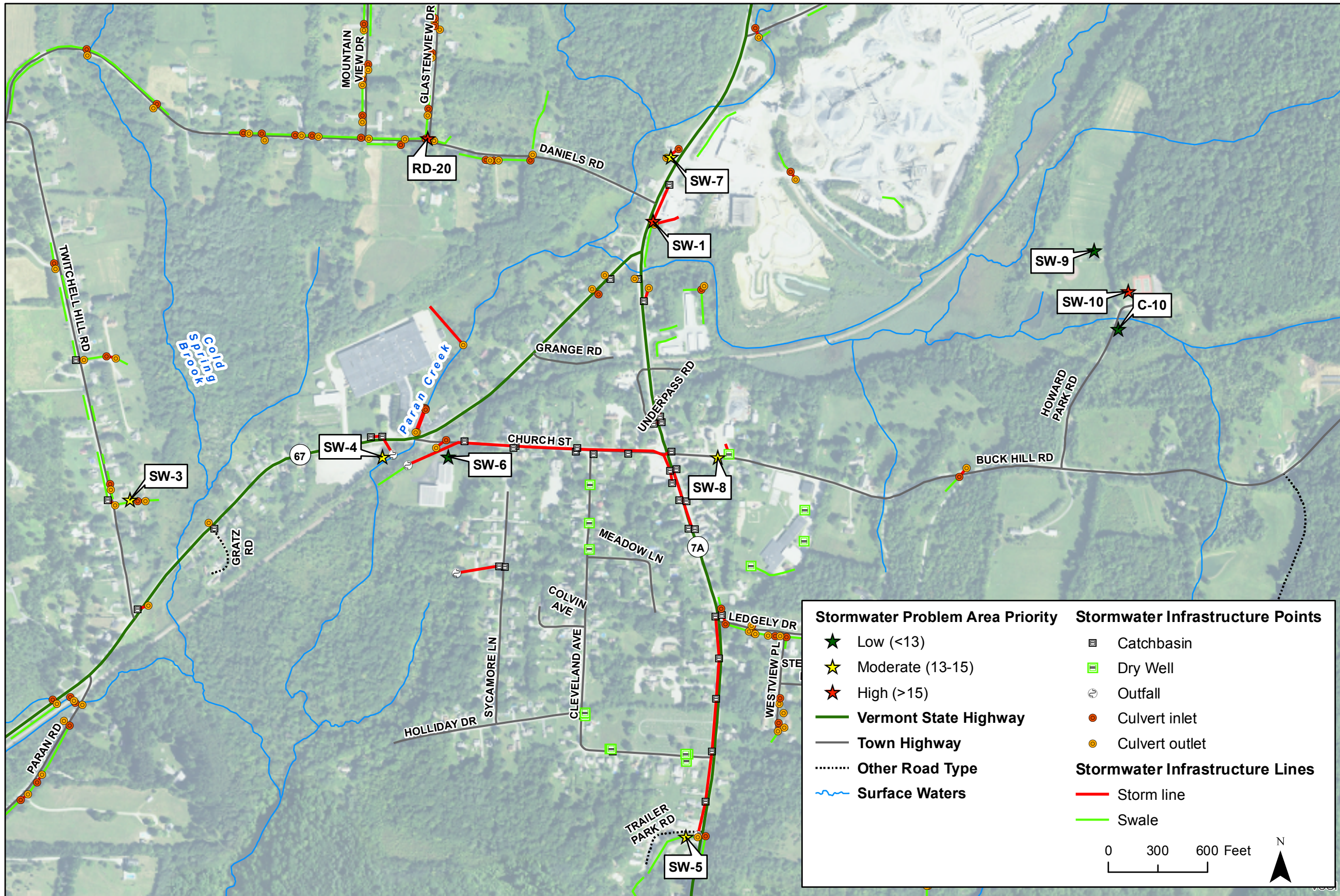
**Notes**

NAIP imagery is from 2016.

**Project Types**

- RD: Road, Ditch, or Conveyance Stabilization/Improvement
- SW: Stormwater BMP Installation or Retrofit
- DC: Drainage Culvert Stabilization/Improvement
- C: Culvert Replacement

Map By: EHB Date: March 19, 2019 Scale: 1:24,000



<b>Stormwater Problem Area Priority</b>		<b>Stormwater Infrastructure Points</b>	
★ Low (<13)	☆ Moderate (13-15)	■ Catchbasin	□ Dry Well
★ High (>15)		⊖ Outfall	● Culvert inlet
— Vermont State Highway		○ Culvert outlet	
— Town Highway			
⋯ Other Road Type			
~ Surface Waters			
		<b>Stormwater Infrastructure Lines</b>	
		— Storm line	— Swale

0 300 600 Feet

N

**Fitzgerald Environmental Associates, LLC.**  
 18 Severance Green, Suite 203  
 Colchester, VT 05446  
 Tel: 802.876.7778  
 www.fitzgeraldenvironmental.com

**Notes**  
 - NAIP imagery is from 2016.

**Project Types**  
 RD: Road, Ditch, or Conveyance Stabilization/Improvement  
 SW: Stormwater BMP Installation or Retrofit  
 DC: Drainage Culvert Stabilization/Improvement  
 C: Culvert Replacement

**Appendix A**  
**Stormwater Master Plan**  
**Problem Areas**  
**South Shaftsbury Detail Map**  
**Shaftsbury, VT**

EHB  
 Map By  
 Scale 1" = 600'  
 Date November 15, 2019

**SHEET 2**  
 SHEET NO.